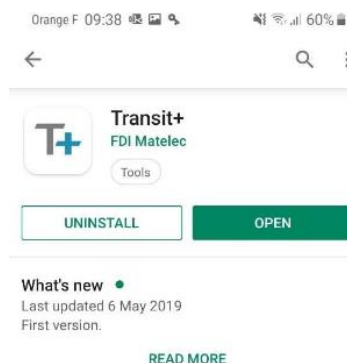


Manual for Transit+ App

The “Transit +” Controller is an advanced access controller designed by FDI.

Doors and credentials are set-up via an App using NFC and Bluetooth connection of your mobile phone.

First step : Install the App on your Android mobile phone :



<https://play.google.com/store/apps/details?id=com.fdimatelec.ipassanble&hl=fr>

Commissioning advantages

- No plug or specific wire required
- Always available and secured (based on BLE protocol, property of FDI)
- Easy fob enrolment via NFC smartphone feature

“Transit + app” uses a Bluetooth connection of your Android phone with the Transit + controllers to simplify the access control management:

- Your access control management is always available in your mobile phone
- All in one simplified interface to add/delete credentials and customise your installation

After the electrical commissioning of all controllers on your site, you will just have to open the app on your mobile :

- Give a name to every group of credentials using the access control systems on the App
- Introduce every fob and remote control required in the group (via NFC reader)
- Transfer the group(s) to the controllers (protected by the pre-define password)

Services : to add, delete or modify a group when you are on site, open the App on your mobile :

- Select the group to modify
- Add/delete or modify the credentials concerned
- Connect and send the new group

To modify the configuration (release time for door 1 or 2 for example)



Manual for Transit+ App

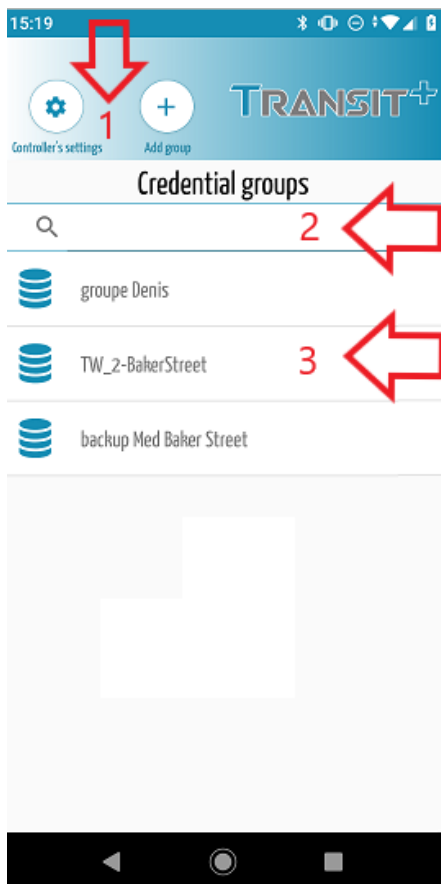
- Use controller settings menu
- Connect to the controller
- Modify the release timer setup (from 1 to 99s)

Table of contents

1- Home page display	2
2- Group management	4
3- Credential set up	6
5- Controller connection	8
5-1- Controller detection	8
5-2 Download or send data	8
6- Controller settings management	10

1- Home page display

Manual for Transit+ App



- 1- Controller's set up menu -
 - 1.1 **"Add group"** (including fobs and remotes)
 - 1.2 **"controller's settings"**

2- search field to help you to sort the list

3- the different groups already set and available in your database.

3.1 - A swipe to the right is used to modify the name of a group

3.2 - A swipe to the left is used to delete the group

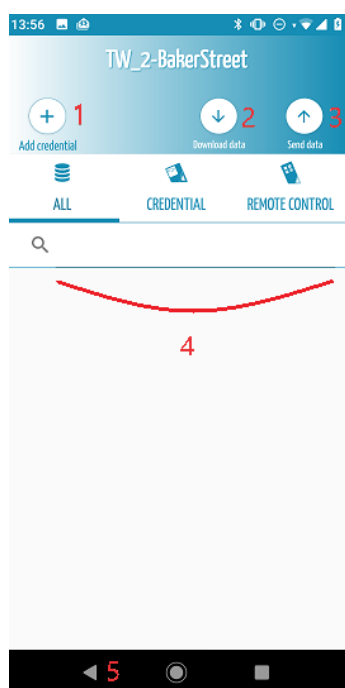
Manual for Transit+ App

2- Group management

Fobs and remotes will be managed and identified in a group (max = 5000 credentials per controller).

From the home display, select a group or press “Add group” (1.1 on home page display) to organize your database, naming a group of users (“Front door baker street 2” for example – max size = 32 characters).

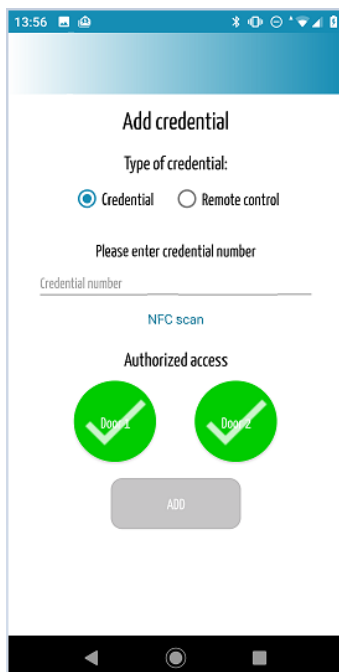
You can store as many groups as you want in your App



- 1- Add every credential authorized to open the doors of the controller(s) : “send data”
- 2- You can receive the already configured credentials from the controller “upload data”
- 3- When list of desired credentials is complete, this group will have to be transferred to the controller : “send data”
- 4- In a group, you can filter the credentials according to their type:
 - Fobs (standard credentials used with readers only)
 - Remotes (available for readers and HF receivers too)

- 5- Leave the group menu and go back to the Home display

Manual for Transit+ App



Credentials are registered in the group with :

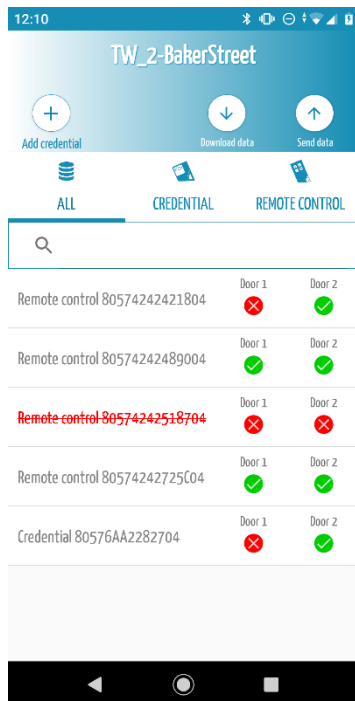
- their type (fob or remote control)

the serial number can be read (using the NFC reader function of your mobile) or typing (using the keypad)

- authorization selection (each click on the door button will switch the selection)

- green ticked = authorized
- red cross = forbidden

Manual for Transit+ App



A group view displays the full list of credentials or sorted by type :
-credential or remotes type

-**the search field** is used to filter the list and sort a credential

it can be used with the NFC reader or the keypad of your mobile

-the authorization of each one is displayed

-To cancel a credential you can either :

- Swipe its number toward the left (delete & icon of the controller will be displayed)
- Click its number and **untick it** (2 red cross)
Its number will be red-scratched meaning that the credential is no longer authorized (un-validated by manager) and will be deleted at the next transfer

3- Credential set up

In a group, each credential can be modified and/or deleted:

Manual for Transit+ App



1- In the controller (after the next transfer)

2- In the database

3- Its authorized accesses can be changed (each click will switch the authorization)

4- "BACK" will go back to the group display and save the changes in progress

Manual for Transit+ App

5- Controller connection

To upload or download a group in a controller, a Bluetooth connection has to be established with a controller:
(Bluetooth standard is a point to point connection).



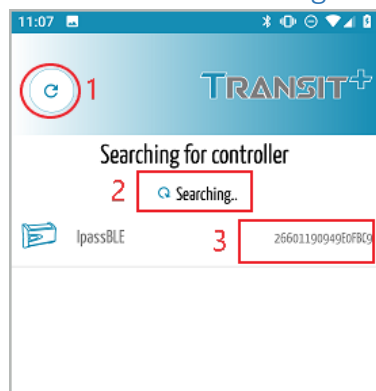
At the first connection, the controller password is : “0000”

The system will ask you to customize the password to secure the connection.

Remember “**your password**” because it’s the only way to connect to the controller (see 5-2)

WARNING: simple passwords will be rejected (1111 or 2222 or 1234 ...)

5-1- Controller seeking



1- Refresh the controllers’ Bluetooth search

2- Operation in progress

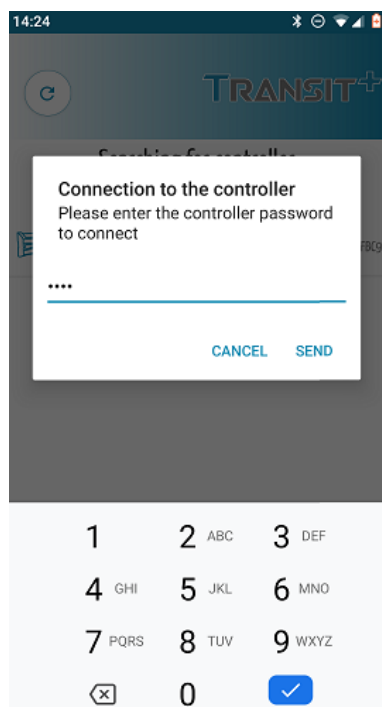
3- List of controllers available

a. After detection, you will select a controller from the list

5-2- Download or send data

When you are connected you can upload data from controller or send a chosen group according to the menu selected.

Manual for Transit+ App



A- The pre-set password has to be typed in to valid the connection

Thereupon, data is sent to the controller

B- In case of a download, a message reminds you that data from the controller will replace the current data in the selected group.

(Stop and create a new group to keep the current or valid to replace)

Manual for Transit+ App



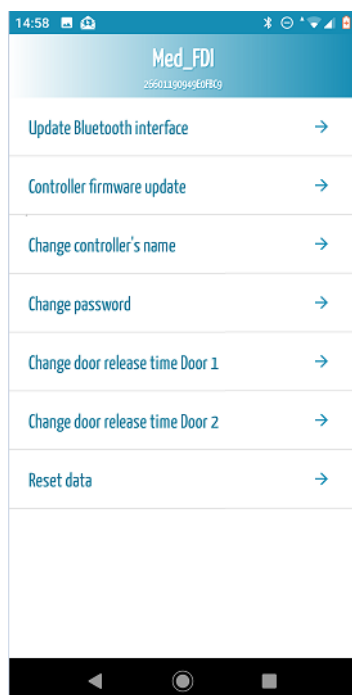
The App screen confirms the data transfer to the controller ... (sending data)



or upload from the controller to the group (uploading data).

6- Controller setting management

From the home page, you can select the “controller’s setup menu” (1.2) and manage the following changes after connection and password validation.



- Menu dedicated to update the BLE (Bluetooth communication) and the controller’s firmware when needed.
- Changing the controller’s name will help you to identify your different access control units in a residence with several controllers
- Password change
- Each door release time is adjustable from 1 to 99s (Factory setting = 5s)
- Full controller reset